

# Low Profile Mag Mount Antenna

LPBEM-6-60

PANORAMA ANTENNAS



- Rugged low profile design
- Covers global cellular / LTE bands 617-960 / 1710-6000 MHz
- Magnetic mount

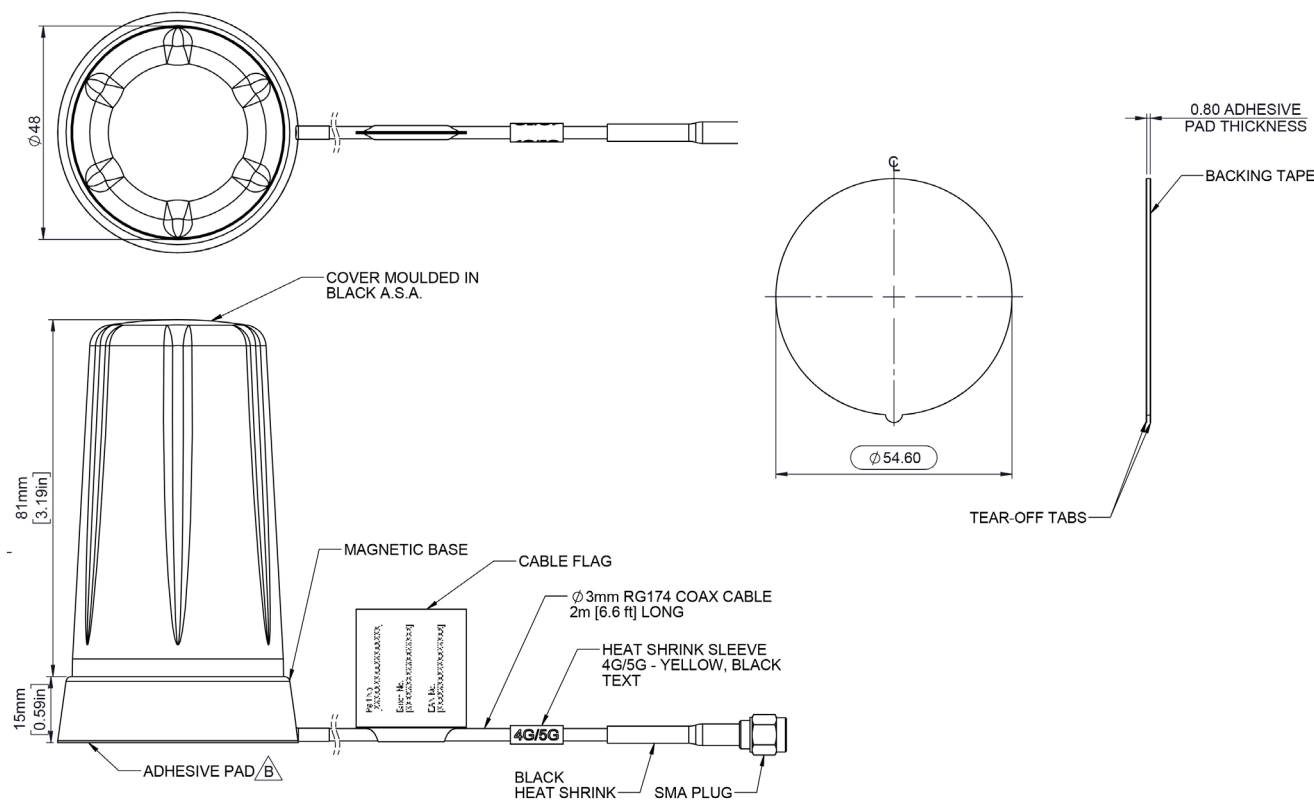
The Panorama LPBEM-6-60 is a range of low cost high performance magnetic mount antennas for temporary fit applications. At only 95mm (3.7") high and protected by a robust high impact radome the antenna is almost impervious to daily wear and tear.

The LPBEM offers excellent performance across a wide bandwidth. The LPBEM covers global cellular and LTE frequencies from 617-960 MHz and 1710-6000 MHz making it an extremely versatile product. Although intended for magnetic mounting on a conductive ground plane the antenna can also be used for desk mounting applications with some impact on performance.

Supplied with a convenient length of flexible RG174 cable and a double sided adhesive pad, the LPBEM is easy to install and compatible with a large range of modems. Multiple units can be deployed suitably separated for MiMo applications.

## Technical Drawing

LPBEM-6-60-2SP shown



# Low Profile Mag Mount Antenna

## LPBEM-6-60

PANORAMA ANTENNAS

### Product Data

Part No.

LPBEM-6-60-2SP

LPBEM-6-60-5SP

#### Electrical Data

Frequency Range (MHZ) 617-960 / 1710-6000 617-960 / 1710-6000

Peak Gain (excluding cable loss measured on a ground plane)

Frequency Range (MHz)	Gain (dBi)
617-960 MHz	3dBi
1710-2170 MHz	4dBi
2170-2700 MHz	5dBi
3400-3800 MHz	6dBi
4000-6000 MHz	8dBi

Typical VSWR\* <2.5:1

Polarisation Vertical

Pattern Omni-directional

Impedance 50Ω

Max Input Power (W) 25

#### Mechanical Data

Dimensions (mm)

Parameter	Value
Height	96 (3.7")
Diameter	48 (1.89")

Operating Temp (°C) -40°/+80°C ( -40°/176°F )

Material UV stable ASA & Aluminium

Colour Black

Ingress Protection Equivalent to IPX6

#### Mounting Data

Fixing Magnetic mount

Max Speed (KM/h) 160 (100 Mph)

#### Cable Data

Cable Type RG174

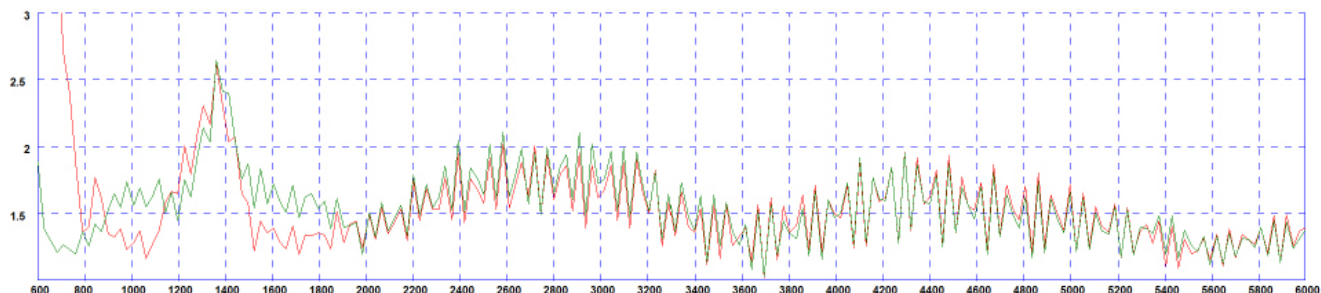
Cable Diameter (mm) 2.8 (0.1")

Cable Length (m) 2 (6'6") 5 (16')

Connector SMA (M)

#### Electrical Data - Cell

Typical VSWR\*



\*VSWR measured on 400x400 ground plane with 2m (6'6") cable.

Green Line - Ground Plane  
Red Line - Free Space